



International Conference



Geoeological Problems of High Mountains

Tatranska Lomnica, Slovakia
September 15 -18, 2009



International Conference

Organized under the auspices of

The Association of Polish Geomorphologists
Association of Slovak Geomorphologists
The Polish Association for Landscape Ecology
Tatra National Park (TANAP)

IV. Announcement

We would like to present you the final Announcement.

General Programme

15.09.2009 – Registration of participants, Conference Opening, Plenary Session, Gala Dinner
16.09.2009 – Excursion on the area of windfall, Poster Session in the afternoon
17.09.2009 – Oral Sessions
18.09.2009 – Selection of excursion

Detailed Programme (in appendix)

Presentations (in PowerPoint) and posters (in format B1 if possible), including posters for Excursion should be prepared in English. Lectures may be presented in following languages: Polish, Slovak, Czech or English. Presentations duration:
– Plenary Session – 30 minutes
– Oral Sessions – 15 min (+ 5 minutes for discussion)
– Poster Session – 5 minutes

Conference Venue

Pension TENISCENTRUM
Tatranská Lomnica 40, 059 60 Vysoké Tatry
www.penzionteniscentrum.sk
tel. +421 (052) 4782 881, +421 (052) 4782 882, +421 (052) 4782 883

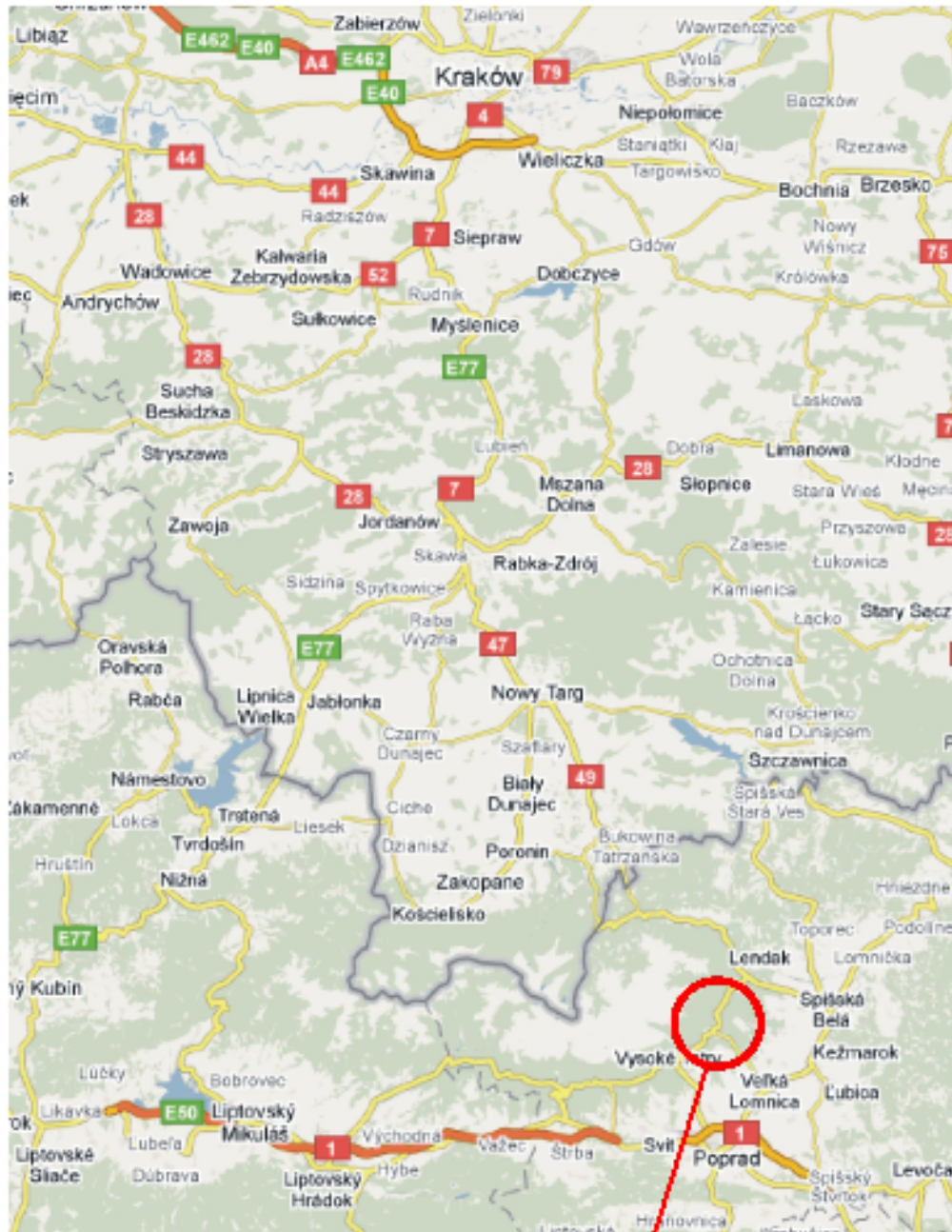
How to get to the Conference Venue?

by train from Poprad - Tatry via Starý Smokovec or via Studený Potok

by bus from Poprad

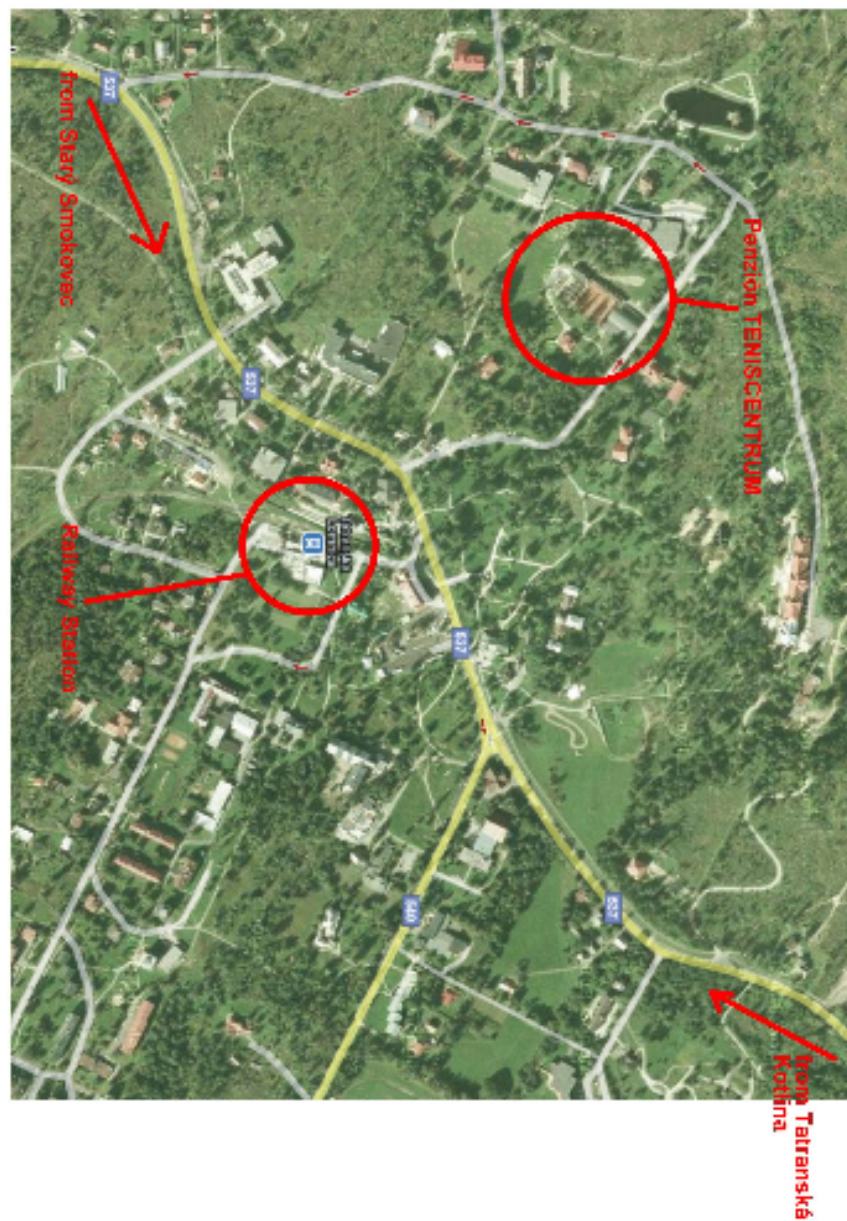
by car

- from Bratislava via Žilina – Liptovský Mikuláš – Poprad – Nová Lesná – Starý Smokovec – Tatranská Lesná
- from Krakow via Nowy Targ – Bukowina Tatrzańska – Podspády – Ždiar – Tatranská Kotlina – Kežmarské žľaby – Tatranské Matliare



Tatranská Lomnica





Payments

Participants will pay for accommodation, foods, gala dinner and excursion (18.09.09) in cash. You can find all prices in the third Announcement.

Also those, who did not transfer their Conference fee yet, can pay in cash at the registration.

In the name of Organising Committee we wish you fruitful conference and pleasant stay in the Slovak High Tatra Mts.

Looking forward

Elżbieta Rojan and Ján Novotný

Elżbieta Rojan
Zakład Geomorfologii WGiSR UW
Ul. Krakowskie Przedmieście 30
00-927 Warszawa
e-mail: erojan@uw.edu.pl
tel. 22 55 20 653, 693 622 213

Dr. Ján Novotný
Institute of Geography, Slovak Academy of Sciences
Štefánikova 49
814 73 Bratislava
Slovak republic
e-mail: geognovo@savba.sk
tel. + +421-2-57510209

CONFERENCE PROGRAMME

15 - 18.09.2009 Tatranská Lomnica

15 September 2009 (Tue) – I DAY

11:00 – 13:00 **Registration** of participants (Pension Teniscentrum in Tatranská Lomnica)

13:00 - 14:00 Lunch

14.00 – 14.20 – Conference Opening Ceremony

Marián Šturcel – vice director of the TANAP (Tatra National Park)
Vysoké Tatry City official

PLENARY SESSION

14.20 – 14.50 Fleischer Peter
FOREST ECOSYSTEMS CONDITION AFTER WINDTHROW CALAMITY IN THE
NOVEMBER 2004

14.50 – 15.20 Kotarba Adam
SLOPE SEDIMENT TRANSFER IN HIGH-MOUNTAIN SYSTEM

15.20 – 15.50 Koreň Milan
GEOECOLOGICAL PROBLEMS OF THE SLOVAK PART OF TATRA MTS.

15.50 – 16.20 Midriak Rudolf
STATE OF ART AND THE NEEDS OF DEVELOPMENT OF THE SLOVAK HIGH
MOUNTAINS GEOECOLOGY

16.20 - 16.40 Coffee break

16.40 – 17.10 Gorczyca Elżbieta, Krzemień Kazimierz
THE ROLE OF EXTREME RAINFALLS IN TRANSFORMING THE TATRA WEST
MTS. RELIEF

17.10 – 17.40 Migoń Piotr
HOW TO DEFINE HIGH-MOUNTAINS? ALTITUDE VERSUS CONTEMPORARY
GEOMORPHIC SYSTEMS IN NON-ALPINE MOUNTAIN RANGES

17.40 – 18.10 Skawiński Paweł, Guzik Marcin
USAGE OF GEOMATICS TO DETERMINE OF VEGETATION BELT IN THE TATRA
MTS.

18.10 – 18.40 Kozłowska Anna, Rączkowska Zofia
PROBLEMS IN GEOECOLOGICAL APPROACH TO HIGH-MOUNTAIN
ENVIRONMENT (BASED ON STUDIES OF RELIEF-VEGETATION RELATIONSHIPS)

19.15 – Gala Dinner

16 September (Wed) – II DAY

8.00 – 9.00 Breakfast

9.00 – 16.00 EXCURSION on the area of windfall (Departure from pension)

Fleischer Peter

PHYSICAL AND CHEMICAL CHANGES OF THE AIR AND SOIL PROPERTIES
AFTER THE WINDFALL 2004

Brzozowski Damian, Jarochowska Emilia, Mitura Anna

SELECTED QUESTIONS FROM GEOMORPHOLOGY ON THE AREA DANIELOVO

Chovancová Barbara

SMALL MAMMALS POPULATION DYNAMIC AFTER THE WINDFALL 2004

Dąbrowska Katarzyna

THE MORPHOGENETIC IMPACT OF THE BORA TYPE WIND (19TH NOVEMBER
2004) ON THE RELIEF OF DANIELOVO DOM AREA

Ferenčík Ján

INSECT OUTBREAKS AFTER THE WINDFALL 2004

Gášpar Dezider

MONITORING OF NATURAL REGENERATION AFTER THE WINDFALL 2004

Holeksa Jan

LARGE-SCALE WINDTHROWS AS A FACTOR SHAPING FORESTS IN THE SLOVAK
SUB-TATRA REGION

Kyselová Zuzana

VEGETATION SUCCESSION AFTER THE WINDFALL 2004

Łajczak Adam

FLUCTUATION OF TEMPERATURE OF THE SURFACE WATER LAYER IN THE
TATRA LAKES OF NORTH AND SOUTH EXPOSURE

Rojan Elżbieta

MORPHOLOGICAL CHANGES WITHIN ROAD INCISION FORMS IN THE
BLOWNDOWN AREA IN THE SLOVAK TATRA MOUNTAINS AFTER
TERMINATION OF INTENSIVE FOREST WORKS

16.00 – 17. 00 Lunch

17.00 – 18.30 POSTER SESSION

Boltižiar Martin

THE SPATIAL PATTERNS OF THE TATRA HIGH-MOUNTAIN LANDSCAPE
STRUCTURE

Brzozowski Damian, Jarochovska Emilia, Mitura Anna

SELECTED QUESTIONS FROM GEOMORPHOLOGY ON THE AREA TATRANSKE
ZRUBY

Buchwał Agata, Fidelus Joanna, Rogowski Mateusz

RELIEF TRANSFORMATION ALONG FOOTPATHS IN THE RILA, PIRIN AND
TATRA MOUNTAINS

Hreško Juraj, Bugár Gabriel, Petrovič František

CHANGES OF VEGETATION AND SOIL COVER IN ALPINE ZONE DUE TO
ANTHROPOGENIC AND GEOMORPHOLOGICAL PROCESSES

Niedźwiecki Jan

CONCEPT OF LANDSCAPE HORIZONTAL BELTS IN THE POLISH TATRA
MOUNTAINS

Remisz Joanna

SCREE SLOPES IN THE KARKONOSZE MTS. - PROBLEMS OF ORIGIN AND
AGEDETERMINATION

Szumacher Iwona

LANDSCAPE UNITS OF THE SOUTH-WESTERN SLOPES OF MT. KILIMANJARO

Żelazny Mirosław, Chmielewska Daria, Wolanin Anna

ANTHROPOGENIC IMPACT ON THE CHEMISTRY OF BIAŁKA, BIAŁY DUNAJEC
AND CZARNY DUNAJEC STREAMWATER (TATRA NATIONAL PARK AND
SOUTHERN PODHALE)

Żelazny Mirosław, Siwek Janusz

INFLUENCE OF GEOLOGICAL STRUCTURE ON STREAMWATER AND
GROUNDWATER HYDROCHEMICAL TYPE IN THE TATRA NATIONAL PARK

Żmudzka Elwira

CHANGES OF THERMAL CONDITIONS IN POLISH TATRAS

19.30 – Dinner

17 September 2009 (Thu) – III DAY

8.00 – 9.00 Breakfast

ORAL SESSIONS

9.00 – 9.20 Minár Jozef, Falt'an Vladimír
INFLUENCE OF THE SITE CONDITIONS ON THE WINDSTORM IMPACT (CASE
STUDY: HIGH TATRAS FOOTHILL 2004)

9.20 – 9.40 Kopecká Monika, Nováček Jozef
FOREST FRAGMENTATION IN THE TATRA REGION IN THE PERIOD 2000 – 2006

9.40 – 10.00 Balon Jarosław
LANDSCAPE BOUNDARIES DYNAMICS IN HIGH-MOUNTAIN GEOSYSTEMS

10.00 – 10.20 Jančura Peter, Beláček Boris, Bohálová Iveta, Slámová Martina
SCIENTIFIC SIGNIFICANCE OF VISUALISATION METHODS FOR EXPRESSION OF
SELECTED ATTRIBUTES OF HIGH TATRAS' LANDSCAPE CHARACTER

10.20 – 10.40 Zwoliński Zbigniew
DESIGNING A MAP OF THE GEODIVERSITY OF LANDFORMS FOR THE POLISH
CARPATHIAN MTS.

10.40 – 11.10 Coffee break

11.10 – 11.30 Jančura Peter, Slámová Martina, Hřčková Lucia, Beláček Boris
DOWNHILL COURSES AS SIGNIFICANT LANDSCAPE STRUCTURE OF THE HIGH
TATRA MTS.

11.30 – 11.50 Jodłowski Miłosz
CLIMBING IN THE WESTERN TATRA MTS. - ENVIRONMENTAL THREATS AND
CLIMBING MANAGEMENT GUIDELINES

11.50 – 12.10 Rachlewicz Grzegorz
GEOPARK BILLEFJORDEN, SVALBARD - ISSUES CONCERNING HIGH ARCTIC
ENVIRONMENT PROTECTION

12.10 – 12.30 Marinescu Ioan Eustatiu , Marinescu Emil, Boengiu Sandu, Popescu Liliana
ENVIRONMENTAL CHANGES INDUCED BY THE DEVELOPMENT OF RANCA
RESORT IN THE MONTANEOUS AREA

12.30 – 12.50 Tremł Václav
TEMPERATURES ACROSS TREELINE ECOCLINE - THE RESULTS OF THREE-YEAR
MEASUREMENTS FROM THE HIGH SUDETES

13.00 – 14.00 Lunch

14.00 – 14.20 Midriak Rudolf
CHANGES OF GLACIATION IN SAGARMATHA NATIONAL PARK/NEPAL DURING
LAST 30 YEARS

14.20 – 14.40 Łajczak Adam
THE AZAU VALLEY IN CENTRAL CAUCASUS MTS – CONTEMPORARY
DEGLACIATION AND MORPHOLOGICAL EFFECTS

14.40 – 15.00 Gachev Emil

INDICATORS FOR MODERN AND RECENT CLIMATE CHANGE IN THE HIGHEST MOUNTAIN AREAS OF BULGARIA

15.00 – 15.20 Zasadni Jerzy, Kłapyta Piotr

AN ATTEMPT TO ASSESS THE MODERN AND THE LITTLE ICE AGE CLIMATIC SNOWLINE ALTITUDE IN THE TATRA MOUNTAINS

15.20 – 15.40 Křížek Marek

COMPARISON OF PATTERNED GROUND MORPHOLOGY IN THE HIGH SUDETES, HIGH TATRAS AND VOSGES

15.40 – 16.00 Coffee break

16.00 – 16.20 Dobiński Wojciech

GEOPHYSICAL METHODS IN RESEARCH OF PERMAFROST IN THE TATRA MOUNTAINS AND NORTHERN SCANDINAVIA

16.20 – 16.40 Kłapyta Piotr

GLACIAL AND PERIGLACIAL RELIEF ON THE SOUTHERN SLOPES OF THE WESTERN TATRA MTS. (SLOVAKIA) - THE RESULTS OF THE FIRST DETAILED GEOMORPHOLOGICAL MAPPING OF THE ZIARSKA, JAMNICKA, RACKOVA AND BYSTRA VALLEYS

16.40 – 17.00 Grešková Anna, Lehotský Milan

RECENT CHANGES IN THE RIVERINE LANDSCAPE MORPHOLOGY OF THE STUDENÝ POTOK BROOK

17.00 – 17.20 Zielonka Tomasz, Ciapała Szymon, Malina Piotr, Piątek Grzegorz

COARSE WOODY DEBRIS IN MOUNTAIN STREAMS AND THEIR INFLUENCE ON GEOMORPHOLOGY OF CHANNELS IN THE TATRA MTS.

17.20 – 17.40 Novotný Ján, Lehotský Milan

RECENT CHANGES OF THE WANDERING – BRAIDED RIVER CHANNEL MORPHOLOGY – THE BELÁ RIVER CASE STUDY (TATRA MTS. AND THE LIPTOVSKÁ KOTLINA BASIN)

17.40 CONFERENCE CLOSING

18.30 – Dinner

18 September 2009 (Fri) – IV DAY

EXCURSIONS

Detail information will be available during the conference (depending also on weather).